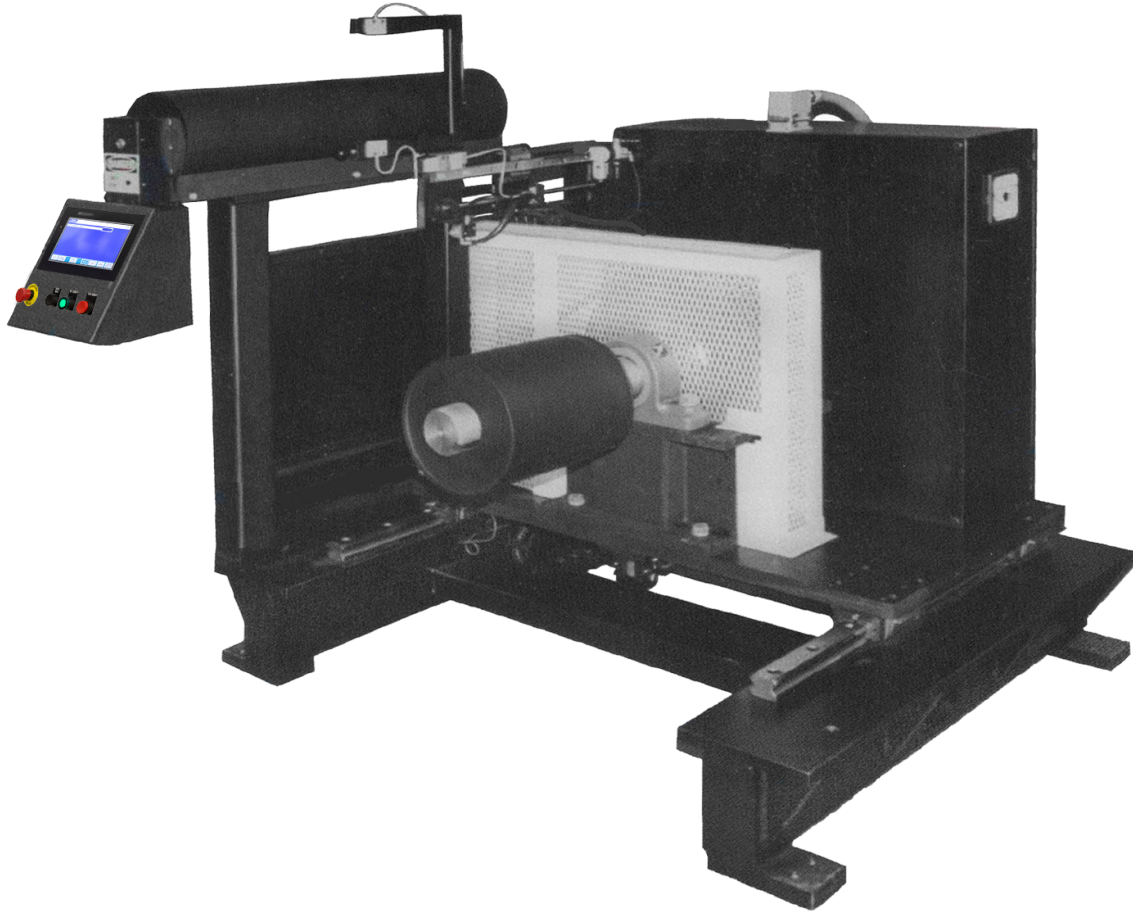




Coilmaster 6000

Model 6000 Stock Take-Up



FEATURES

- 6000 pound weight capacity
- 48" coil diameter capacity
- 16" material width
- Edge control system
- Programmable stock tension, constant or variable
- 12" diameter by 16" wide expanding mandrel
- Urethane coated infeed roller
- PLC controlled with operator interface
- Reversible left hand and right hand operation

OPTIONS

- Back flange (aluminum or steel)
- Paper payout spindle
- 16" diameter expanding mandrel
- Second roller for S-wrap infeed
- Tail clamp
- Custom mandrels and flange arrangements also available

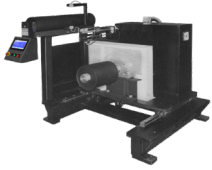


Customized Products
For Any Applications!

jcrautomation.com

JCR Automation
1426 Ryan Rd
New Haven, IN 46774
Phone: 260-493-6606





Coilmaster 6000

Specifications

POWER REQUIREMENTS

240 VAC, three phase, 20A

AIR SUPPLY

Required with tail clamp only (80PSI Minimal CFM)

STOCK SIZE

1" to 16" width.

COIL SIZE

12" Standard ID, 16" Optional ID, 48" Maximum OD,
16" Wide, 6000 pound weight capacity

FEED RATE

50 FPM with 12" mandrel standard Other feed rate available at customer request.

MANDREL

Standard 12" expandable 11 1/2" to 12 1/2"
Optional 16" expandable 15 1/2" to 16 1/2"

PRODUCT FEED

Left to right or right to left (must be specified).

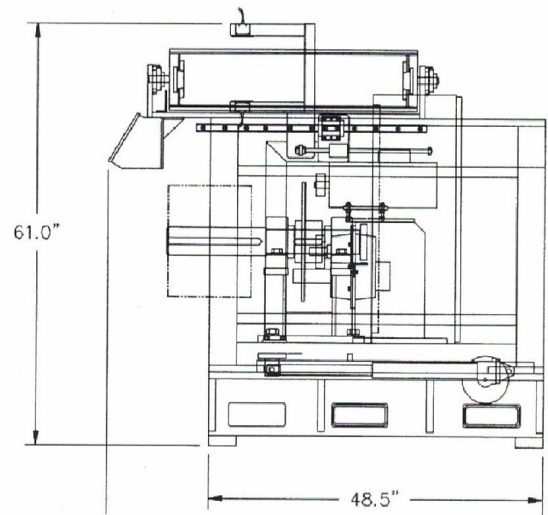
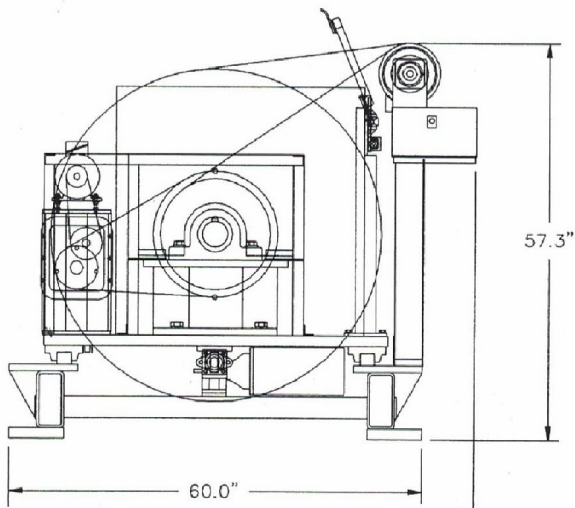
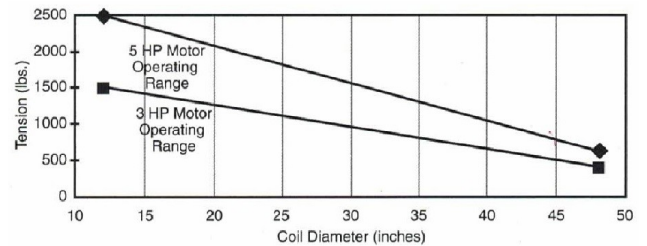
EDGE CONTROL SYSTEM

Analog optical edge sensor (manually set by the operator) with programmable offset, ball screw actuator driven by a 1/2 HP DC motor and controller, and linear slides.

Automatically adjusts mandrel position to provide near perfect coil geometry.

SPINDLE MOTOR

Programmable torque/tension, 5HP brushless DC drive 0 to 9,500 in.-lb. torque at the spindle.
Optional 7.5HP brushless DC drive 0 to 15,000 in.-lb. torque at the spindle. Programmable tension set point at minimum and maximum coil diameter.



Customized Products
For Any Applications!

jcrautomation.com

JCR Automation
1426 Ryan Rd
New Haven, IN 46774
Phone: 260-493-6606

